

*What are the key considerations in  
this debate?*

*Peter Draper, Sustainability Chair STBA*

*Caerphilly Castle 23<sup>rd</sup> October 2019*



Example of EnerPHit deep retrofit in London.  
 Costs around £500 per m<sup>2</sup>  
 EPC A rated.

VS



# Decarbonisation of housing:

**STBA**

SUSTAINABLE TRADITIONAL  
BUILDINGS ALLIANCE

**How can all benefit?**

*Fuel Poverty, employment, health, community*

**Will it lower carbon emissions? Or increase them?**

*Comfort taking, Embodied carbon*

**Will it make homes healthier, preserve character etc?**

*Holistic viewpoint*

**Who pays for it? And how?**

*O/O, Govt, Landlords, RSL, Loans, PAYS, grants*

**How to minimise costs?**

*Economies of scale, do it right first time*

**Are our models of houses and processes right?**

*PHPP, SAP, rdSAP, Archetypes, PAS2035 and 2030*

**Do we have the ability / skills and knowledge to get it right?**

*Colleges, schools, professionals, industry*

**Do we have the time to get it right?**

*2050? Unintended consequences*

**How do we best encourage or enforce adoption / change?**

*Carrots / Sticks (Council tax?), WHQS, MEES, RICS*

**Can we mandate maintenance / approved improvements?**

*Part L, Hybridisation of heating*

# Decarbonisation of grids and infrastructure:



**Is this a springboard for more energy initiatives?**

*BioLPG development, Green grid gas, hydrogen, tidal?*

**Where and how do we store energy?**

*Community batteries, electric cars?*

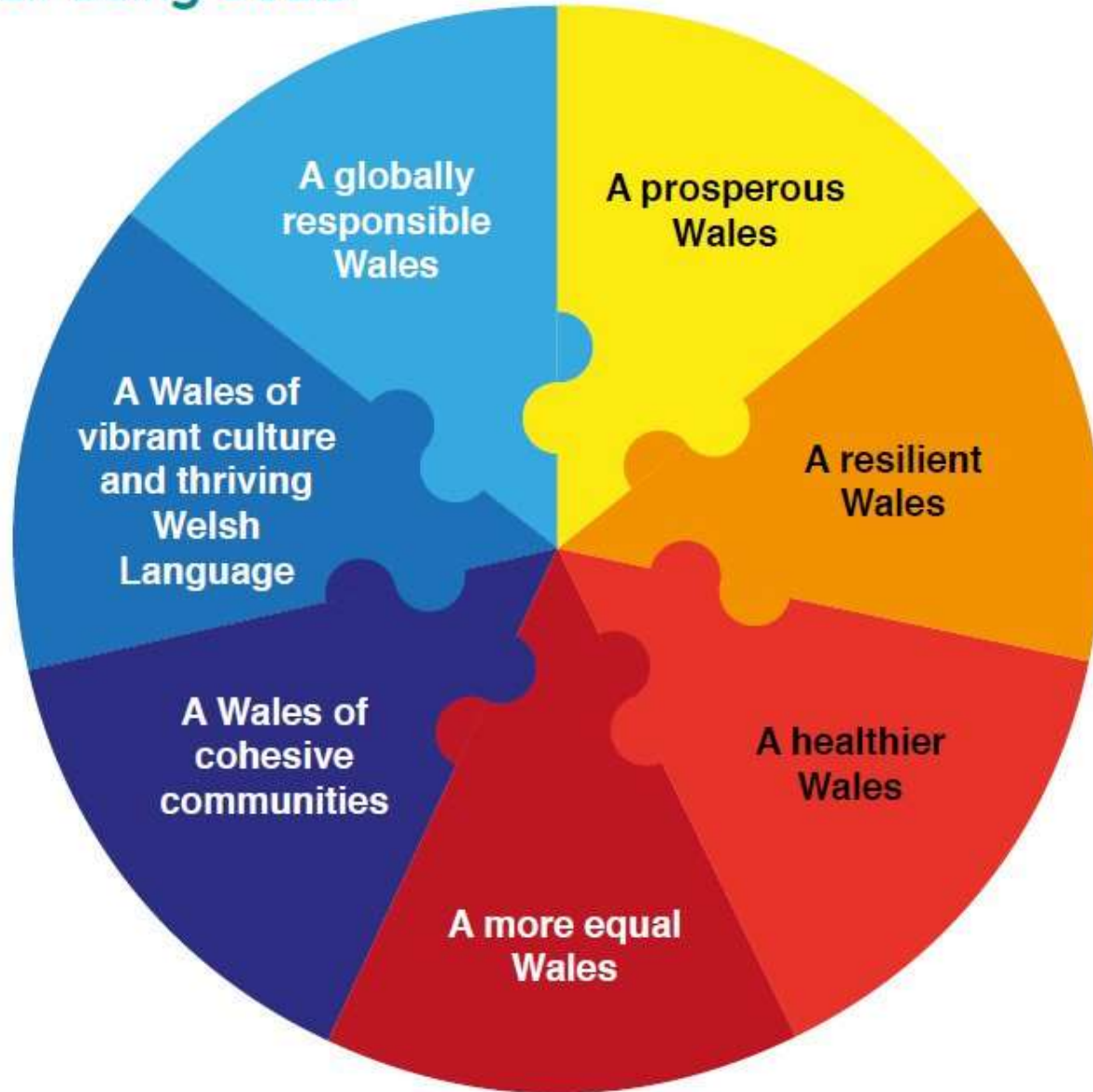
**Can we create wider community benefits?**

*Community Energy and Energy Local model rolled out?*

**Can we create a Circular economy to benefit Wales PLC**

*New manufacturing in Wales e.g. Insulating lime render, wooden windows made with Welsh Accoya*

## Well-being Goals

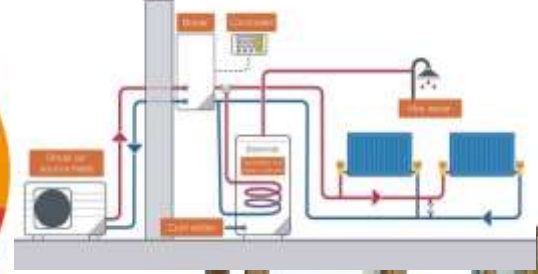


# STBA

SUSTAINABLE TRADITIONAL  
BUILDINGS ALLIANCE

## Key considerations

	A globally responsible Wales	A prosperous Wales	A resilient Wales	A healthier Wales	A more equal Wales	A Wales of cohesive communities	A Wales of vibrant culture and Welsh language
Retrofit	+	+	+	+	+	+	+
	-	-	-	-	-	-	-
Grid De-carbonisation	+	+	+	+	+	+	+
	-	-	-	-	-	-	-



# MADE IN WALES



Energy Efficiency Rating	
Very energy efficient - lower running costs	Worst
100-100%	A
69-99%	B
39-68%	C
1-38%	D

Environmental Impact (CO <sub>2</sub> ) Rating	
Very environmentally friendly - lower CO <sub>2</sub> emissions	Worst
100-100%	A
69-99%	B
39-68%	C
1-38%	D



SSE Southern Electric

www.sse.com

Here's your electricity statement

For the period: 11 September 2016 to 10 March 2017

Your previous statement: 11/09/16 to 10/03/17

Outstanding: £20.00 credit

Balance after your payments: £19.44 credit

Your electricity account number: 0000000000

Your actual reading: 12345

Please based your statement on the latest actual meter reading.



# CHANGE RESISTANCE

